

Atlas Computers Ltd

15 Moyville Lawns,
Taylors Lane, Rathfarnham
Dublin 16
Ireland



Tel: +3531 4958714/5/6
Fax: +3531 4958717

Email: sales@atlascomputers.ie
support@atlascomputers.ie

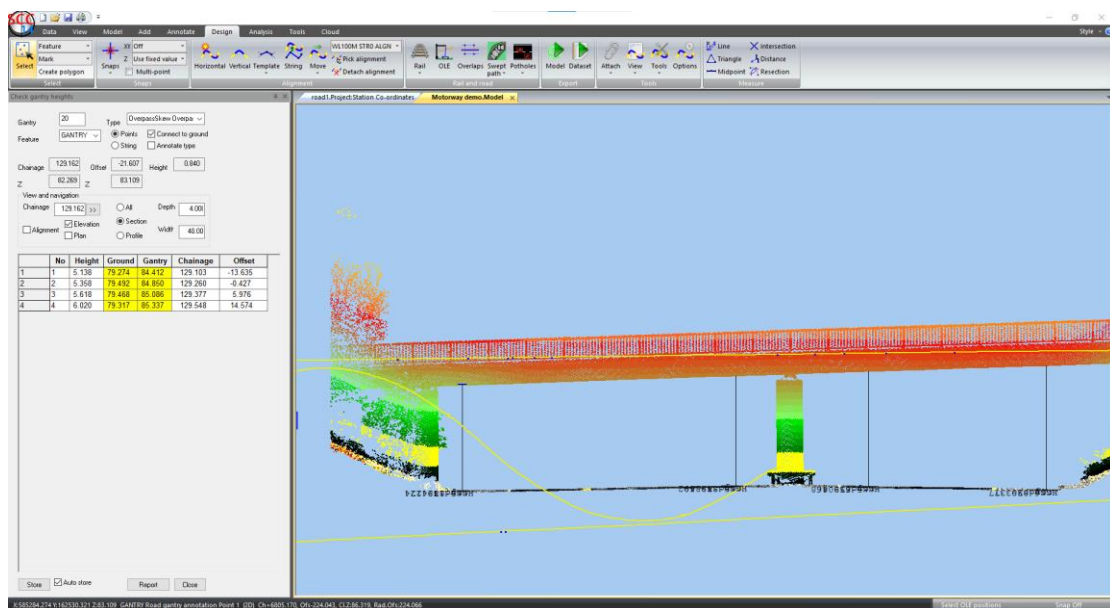
Web: www.atlascomputers.ie



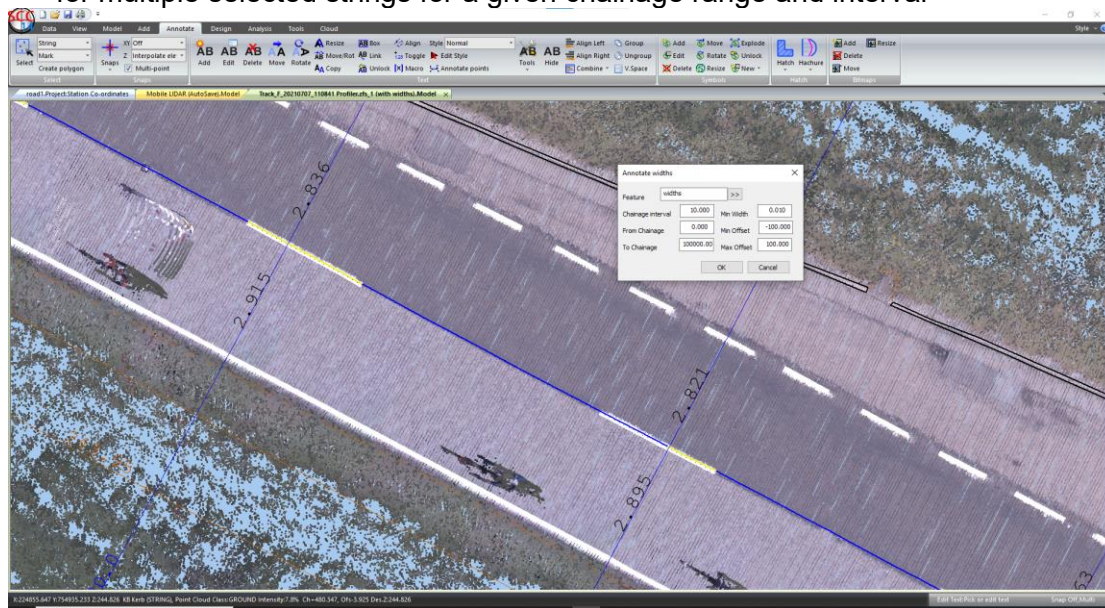
Date: November 2021
Re: SCC 14.0.4

We are pleased to announce a new major release of SCC with SCC 14.0.4. This release contains the following modifications from SCC 13.31.3;

- SCC r14 has been fully tested against Windows 11
- A new option has been added for rapid extraction, annotation and reporting of road gantry and bridge heights. This is available via **Design / Swept path / Gantry heights**

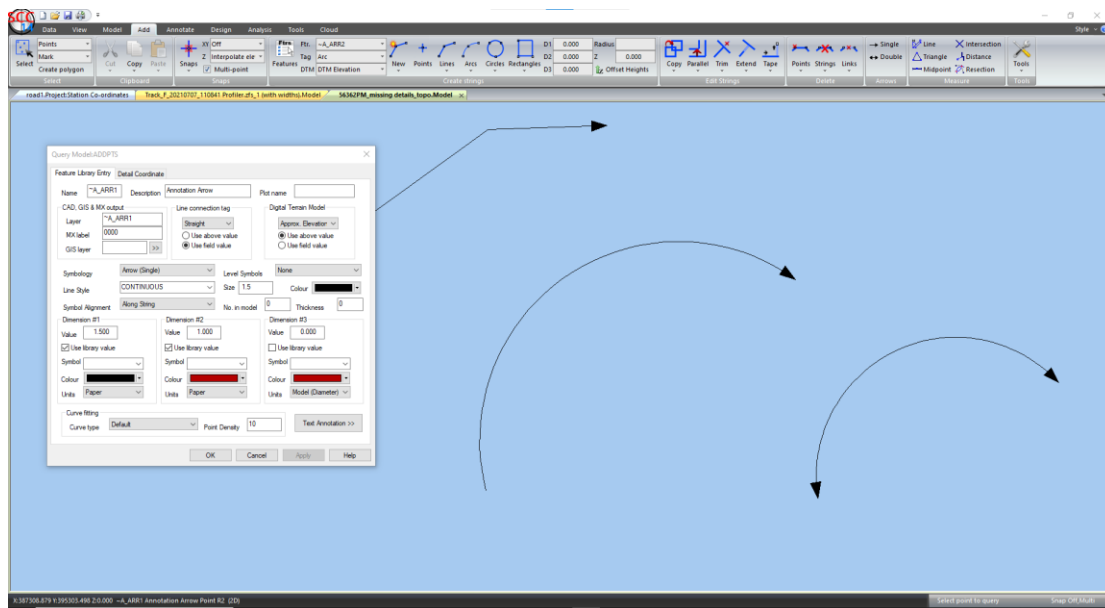


- Support has been added for import structured and unstructured point clouds from Recap RCS and RCP formats and for export edited point clouds back to RCS format.
- Support has been added to import Z+F point clouds in ZFS format
- The E57 import has been updated to support polar spherical coordinates as well as cartesian coordinates and fix has been made to the E57 export which was failing on very large point clouds.
- A new tool has been added to annotate widths between strings by chainage, available via **Annotate / Tools / Annotate widths by chainage**. This will work for multiple selected strings for a given chainage range and interval



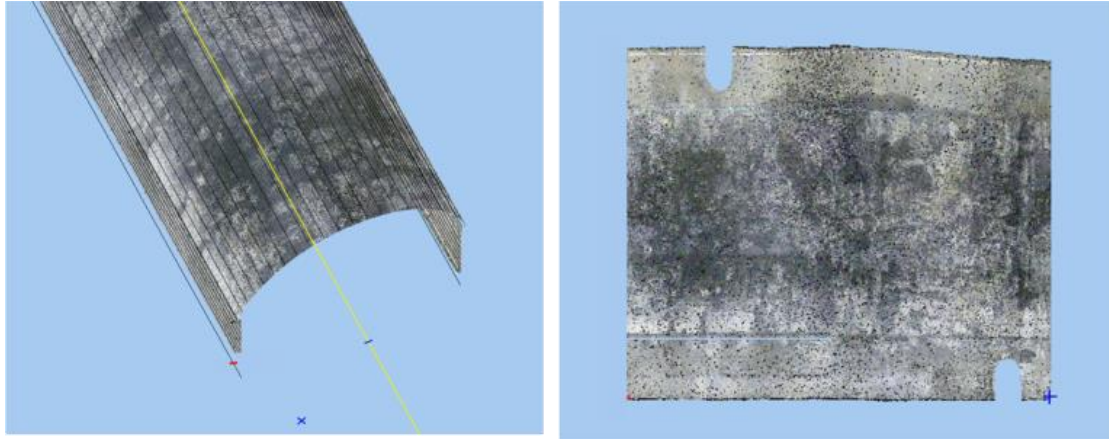
- Greatly improved support has been added for surveying and processing GIS attribute data, for utility surveys and similar works, across a range of instruments for export to systems such as ESRI ArcGIS, QGIS, Global mapper and AutoCAD. This includes the following enhancements;
 - Options to view GIS meta data as sheet or wizard, view GIS data and view GIS option lists from within a model, survey and project. These options are available under the Data / Features drop down menu
 - Support for automatic completion of GIS data fields from model values, for X, Y, Z, Chainage, Offset, Feature name, D1, D2, D3, 2D string length, 3d string length and polygon area. These are set up as defaults in the GIS meta data and get automatically populated when either exporting a shape file or editing a model.
 - Additional shape file export options to control whether output is 2d or 3d, addition of extra polygon points for AutoCAD import, automatic population of missing database fields, and control whether lists get exported as text or integers
 - Addition of GIS layer to the feature tab of the model Query and edit function, such that features can easily be assigned to GIS layers.

- Schema update option to allow changes in GIS meta data in models over the course of a project using a new project with an older model. This is available under **Data / Features / Update GIS meta data**
- Export of GIS meta-data sheet to FXL format for Trimble loggers
- New options have been added for creating single headed and double headed arrows for plan and 3d drawing. These are available directly from the Model / Add ribbon or by using the feature library with symbology set to Arrow (Single), Arrow (Double), V. Arrow (Single) or V. Arrow (Double). Arrow head length is set using D1 and width via D2. Using the ribbon creates and uses ~A_ARR1 and ~A_ARR2 for this purpose. Arrow strings can be used with any tag codes to support arrows that are straight, curved, arc



- The export images option now includes an option to create a DWG containing the images, where the image is correctly scaled and positioned in ground units. This simplifies creation of ortho-images as an underlay to CAD linework. The number of decimals on JGW world file has also been increased to allow for very high precision import of images to GIS systems.
- A new tool has been added to interpolate missing levels on strings, available via **Tools / Model / Interpolate missing levels**. This is something that can potentially happen when drawing over a point cloud with the wrong cloud snap selected, which in turn would lead to the points having an invalid level. This tool re-interpolates missing points using other valid points, where you can set a valid levels range. By default, it sets these points to DTM approx on the basis they're interpolated.
- A new tool has been added to vectorize outlines, i.e., draw polygons around areas of similar slope / gradient based on the currently active slope colouring scheme. This is available via **Model / Slopes Slope outlines**
- The maximum number of slope ranges is no longer limited to 20 and slope range re-scaling is now supported.

- The tunnel modelling tool has been updated to support better generation of a set of templates for accurate unwrapped. This includes an option to extend the template edges vertically beyond the point cloud to allow a level starting position and horizontal extension of starting and ending chainages. The speed of model unwrapping using complex templates has also been hugely improved



- The AutoCAD r18 and later export has been improved and now creates a DWG directly without first creating a DXF
- A new option has been added to the CAD export to export white lines as thickened polylines rather than solids or outlines. Note that the thickening effect will only be visible in 2D AutoCAD drawings
- A new option has been added to the copy parallel tool to interpolate levels for all points on the created parallel string from the point cloud
- New ribbon options have been added to the design panel to interactively pick the active alignment and to interactively detach alignments
- Most model string editing tools will run considerably faster when applied to a large number of pre-selected strings
- A number of enhancements have been added to the Geomax interface to support newer versions of the XPAD software. These include support for new arc formats, duplicate traverse points, setup numbering and changes in output format
- A new option has been added to coordinate reduction to automatically run invert levels computation on download
- The Leica HEXML interface has been enhanced to support newer check shot options, and display of GDOP as an extra column in the detail observation sheet
- The network dongle timeouts and checking interval have been extended to minimise the risk of losing a license due to intermittent VPN and network connectivity issues.
- Creating new text or line work always turns on the feature that is being used, this overcomes the problem with feature 0 being turned off by default in some project templates
- The wriggle analysis tool has been updated to handle invalid rings causing skipped ring numbers on report

- The ADB tree processing tools and tree template project have been updated
- Support for CSECONDS units STAR*NET import
- Fix, Toggling level text now also toggles the cross without needing the regen
- Fix, Level text crosses are now coloured correctly where the colour is not the main feature colour
- Fix, reference spans distance tolerance updated
- Fix, display issue on unlocked point symbols were showing extra symbols
- Fix, unwrapping of point clouds > 4 billion points was causing a crash
- Fix, rotating text as you created it was going in the wrong direction
- Fix, trace linear where auto-storing sections was not advancing to the next chainage
- Fix, automatic removal of illegally placed model text, e.g., text at 0,0 in model in national grid coordinates
- Fix, tiling from polygons was not working in some complex cases

This release is available for immediate download using the links below;

Full install (1.6gb): <https://atlas-files.com/scc-users/setup-scc-14-0-4.exe>

Update (244mb): <https://atlas-files.com/scc-users/setup-scc-14-0-4-update.exe>

MSI full (1.6gb): <https://atlas-files.com/scc-users/setup-scc-14-0-4.zip>

MSI update (244mb): <https://atlas-files.com/scc-users/setup-scc-14-0-4-update.zip>

Please note running these installations requires administrator privileges to properly install all components and that all components (SCC, Faro SDK, Trimble Link Engine, HASP driver and VS service packs) must all be installed for the installation to work. SCC r14 is currently supported on 64-bit versions of Windows 10 or later. As of this release we are no longer actively supporting Windows 7.



We have a youtube channel of video tutorials covering most of the typical uses of SCC here. We are regularly adding to this channel so if there is any specific area you would like to see covered by a video tutorial, please let us know. Please subscribe to our channel to keep updated with new material.

If you would like a demonstration of the new features or any existing features of SCC, we can be contacted at 003531 4958714 (Ireland), or in the UK via +44 (0)1767 666100 (Visual-ize). The SCC r13 brochure can be downloaded [here](#)

If there are any new features you would like to see added to SCC or have any problems with any of the existing features, we'd be delighted to hear from you.



To keep up to date with developments in SCC please join our user forum [here](#) or Linked In group [here](#)