

Atlas Computers Ltd

15 Moyville Lawns,
Taylors Lane, Rathfarnham
Dublin 16
Ireland

Tel: +3531 4958714/5/6
Fax: +3531 4958717

Email: sales@atlascomputers.ie
support@atlascomputers.ie

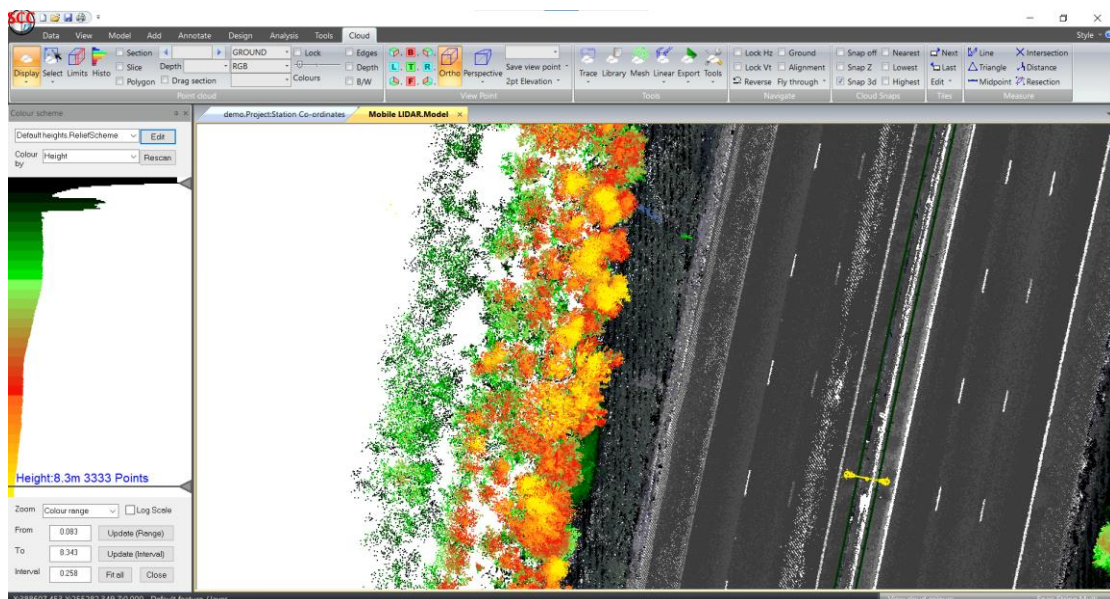
Web: www.atlascomputers.ie



Date: April 2021
Re: SCC 13.31.3

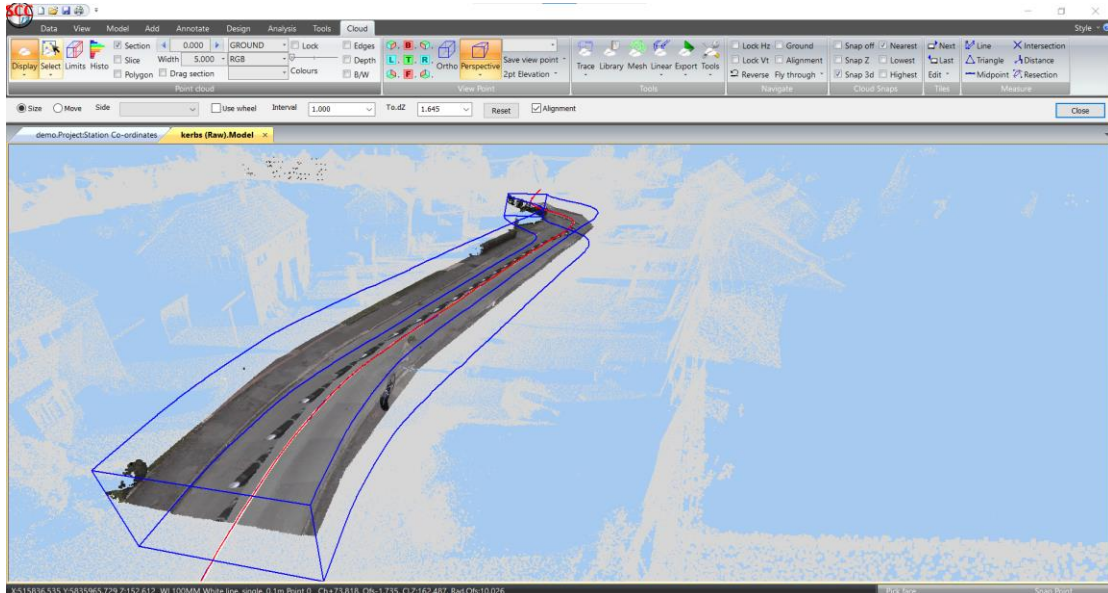
We are pleased to announce a new interim release of SCC with SCC 13.31.3. This release contains the following modifications from SCC 13.28.7;

- A new option has been added to dynamically change point cloud colouring schemes using histograms showing active ranges of intensity, elevation, height and design separation. This can be updated based on currently active points and point classes / features and used to generate and save new colour schemes



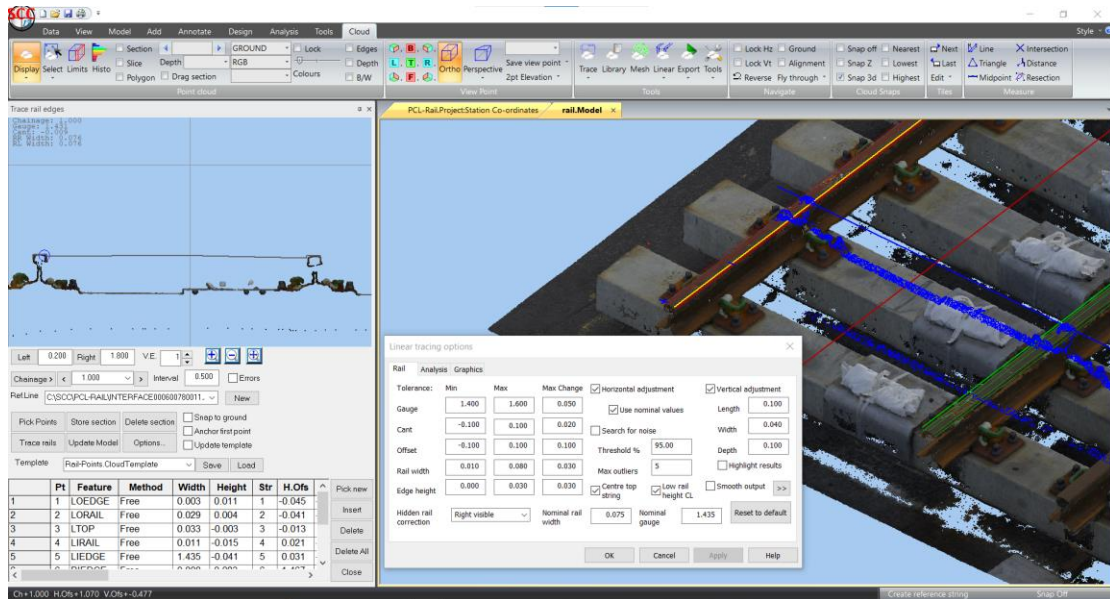
We've placed a short tutorial video covering use of this feature on our youtube channel here; <https://www.youtube.com/watch?v=tWkaU0I5njs>

- A new option has been added to interactively define limit boxes and limit corridors within a point cloud. Short tutorial video here; <https://www.youtube.com/watch?v=Q72yYULrNzw>



- A number of new text alignment, boxing, linking and grouping tools have been added to speed up processing of jobs, such as utility surveys, that contain a lot of text. A tutorial video is available here; <https://www.youtube.com/watch?v=aUUIxEE75aY>
- A new option has been added to simplify creating a new project and importing point cloud data in multiple formats as a single operation. Short tutorial video here; <https://www.youtube.com/watch?v=2FBXNh62RoE>
- A new option has been added to the point cloud tiling routines to allow tiling based on an existing model containing multiple polygons. In addition to creating a tiled SCC model there is also an option to export the tiles to an external format such as E57, LAS, LAZ or PTS on the fly for import into other packages that need precisely tiled input. Short video tutorial here; https://www.youtube.com/watch?v=J2AbxRPE_y0
- The Geomax interface now supports import of levelling data from the GeoMax ZDL700
- The Geomax interface has been updated to support GIS attributes. This includes automated update of the project to create necessary metadata for export to shape files and reports. A sample GIS crystal report has been added to illustrate this.
- The Geomax interface now supports spline types added in latest update to Xpad

- The LandXML export now includes an option to output polylines as simple line arrays rather than chains to better support Geomax and Leica setting out and machine control tools.
- The automated rail extraction routines have been updated to support adjustment when used with high precision photogrammetry derived rail data. This includes distance weighted vertical adjustment using multiple input points on the rail top and horizontal adjustment with options to weight based on nominal rail width and gauge



- An option has been added to the automated rail extraction to set the height of the generated centre line to that of the low running edge rather than the mean value.
- An option has been added to the automated rail extraction to smooth the adjusted results based on a defined output interval and tolerances
- The STAR*NET input has been enhanced to support a wider range of record types including TB, T, TE, DV, D, A, V and TN types. Note that SCC reduces slope distances and vertical angles to form horizontal distances and level differences which are then adjusted, so separate D and V records get paired as part of the download.
- Dashed and solid white lines now allow field coding of dimensions. These will not be used if the corresponding dimensions in the feature library are set to Fixed
- Copy and paste speed from SCC sheets into Excel has been increased by a factor of ten
- A new field has been added to the units page of the general options dialog to specify default number of decimal places used when annotating grades / slopes

- The find orphan points option now includes a prompt to view all points found in a spreadsheet for analysis and reporting purposes
- Point selection options on the ribbon now include selection of points in the same group
- Model extents are now updated by text outside of model point extents
- A bug has been fixed where Select polygon was occasionally missing points on huge point clouds (i.e. over 4 billion points)
- An option has been added to check the feature library for any illegal layers, line style definitions, and missing or corrupt symbols
- Editing strings with multiple field notes on a single point no longer drops one of the field notes
- A bug has been fixed in the feature wizard where changing to a new feature without saving updates to the previously edited feature could change the new features.
- Annotation angles now defaults to text size to that used for last manually created text item
- A bug where text there was occasional ghosting on the text cursor has been fixed

This release is available for immediate download using the links below;

Full install (1.5gb): <http://www.atlas-files.com/scc-users/setup-scc-13-31-3.exe>
Update (130mb): <http://www.atlas-files.com/scc-users/setup-scc-13-31-3-update.exe>
MSI full (1.5gb): <http://www.atlas-files.com/scc-users/setup-scc-13-31-3.zip>
MSI update (130mb): <http://www.atlas-files.com/scc-users/setup-scc-13-31-3-update.zip>

Please note running these installations requires administrator privileges to properly install all components and that all components (SCC, Faro SDK, Trimble Link Engine, HASP driver and VS service packs) must all be installed for the installation to work. SCC r13 with the ribbon interface is currently supported on 64 bit versions of Windows 7 or later. SCC r13 classic is available for 64 and 32 bit versions of Windows 7 or later.



We have a youtube channel of video tutorials covering most of the typical uses of SCC here We are regularly adding to this channel so if there is any specific area you would like to see covered by a video tutorial, please let us know. Please subscribe to our channel to keep updated with new material.

If you would like a demonstration of the new features or any existing features of SCC we can be contacted at 003531 4958714 (Ireland), or in the UK via +44 (0)1767 666100 (Visual-ize). The SCC r13 brochure can be downloaded here

If there are any new features you would like to see added to SCC or have any problems with any of the existing features we'd be delighted to hear from you.



To keep up to date with developments in SCC please join our user forum here or Linked In group here