



Ireland

Tel: +3531 4958714/5/6
Fax: +3531 4958717

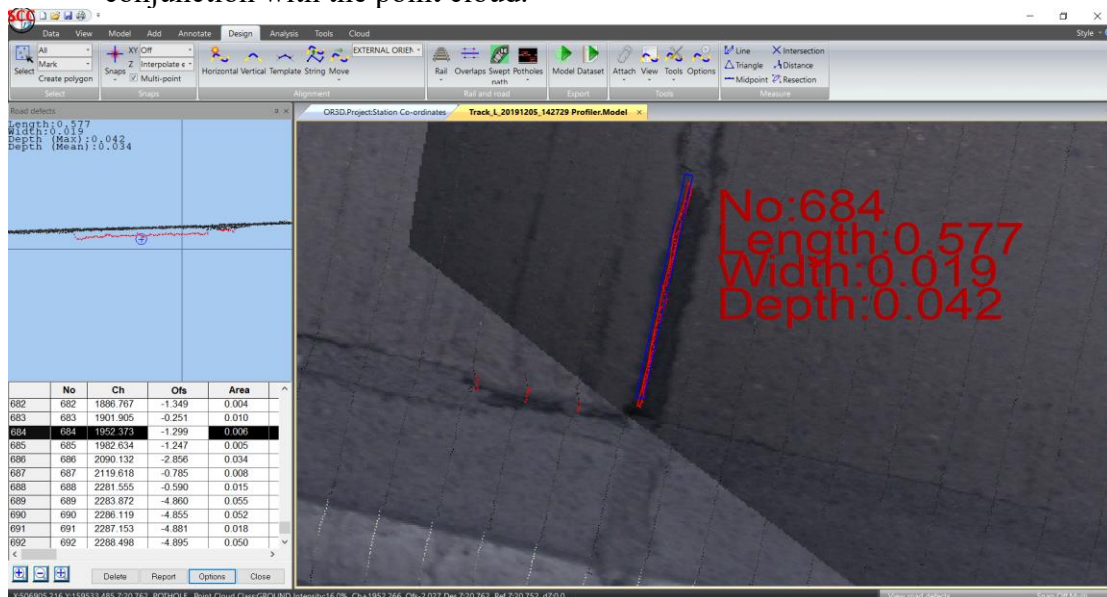
Email: sales@atlascomputers.ie
support@atlascomputers.ie

Web: www.atlascomputers.ie

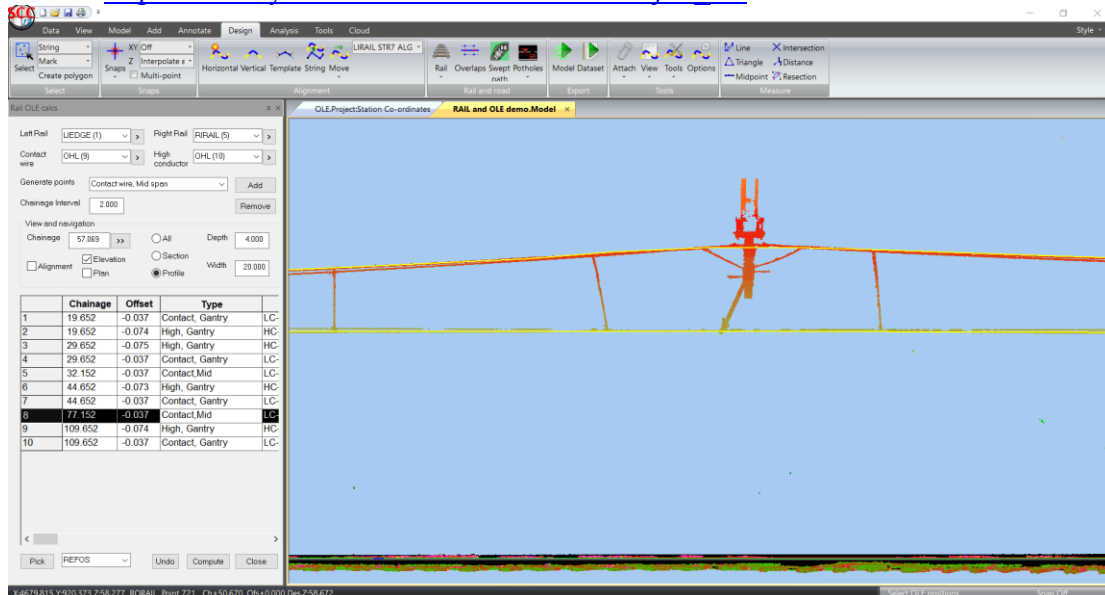
Date: May 2020
Re: SCC 13.23.3

We are pleased to announce a new interim release of SCC with SCC 13.23.3. This release contains the following modifications from SCC 13.21.6;

- A new tool has been added for automated extraction and analysis of road defects / potholes from a point cloud. This tool includes automated vectorizing of potholes, computation of dimensions, area and depth, annotation of model with results and reporting with graphics via Crystal reports. Please check out the following tutorial video <https://www.youtube.com/watch?v=IHTDA4r9jmM> for a full worked example which also includes use of Leica Pegasus pavement camera data used in conjunction with the point cloud.



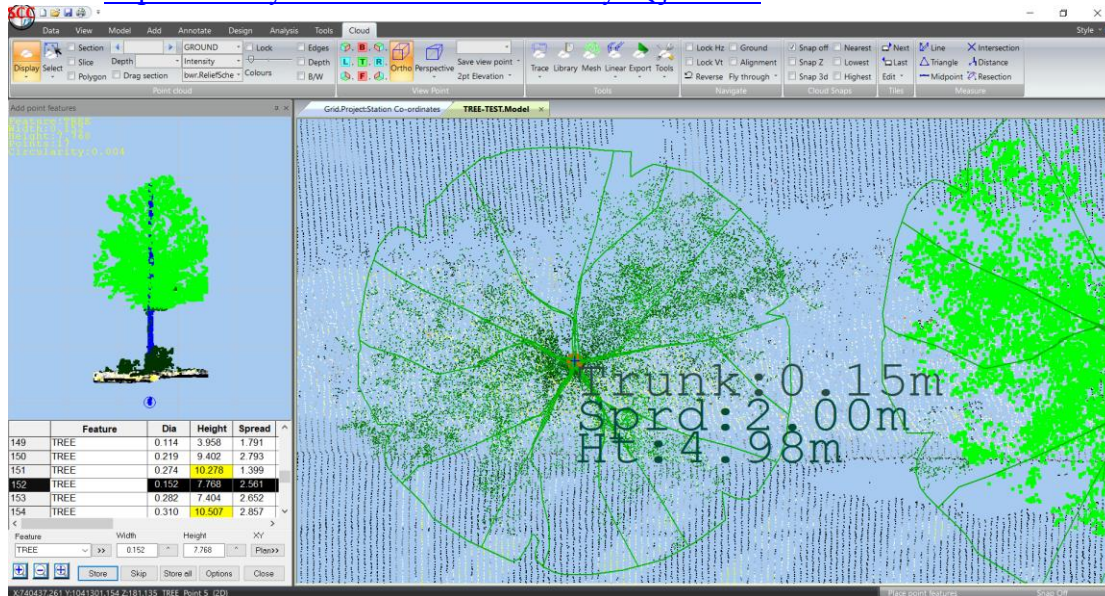
- The OLE tool has been enhanced to support rapid extraction of booms and REFOS in addition to height and stagger. This includes single click switching between cross section view for gantries, profile view for contact points and plan view. For more details please see the following video, <https://www.youtube.com/watch?v=4137xXJUpQA> For details on how to extract the rails and overhead lines used by this tool see https://www.youtube.com/watch?v=9HzC-j74_E8



- A new tool has been added to streamline drawing and annotating of multiple slabs or tiles relative to a curved alignment. See the following video tutorial for more details <https://www.youtube.com/watch?v=kiOKYGkrNGA>
- New tools have been added to trim all selected strings inside or outside of a polygon. This tool works well in conjunction with the new slabs tool. See the following video tutorial for more details https://www.youtube.com/watch?v=1a4Z_dGvm8E
- A new tool has been added to the view menu to allow you to navigate along any string using the mouse wheel. Speed can be controlled under camera options and zooming with the mouse wheel is still possible by holding down the CTRL wheel. This option can be used in conjunction with any other editing options and is ideal for working with long linear models such as roads or railways. See the following video tutorial for more details <https://www.youtube.com/watch?v=ImvQ705TdrY> The option to navigate strings is also available using the follow option when tracing linear features and also in the OLE height and stagger tool.
- New options have been added to the trace rails tool when updating the model to control if strings are updated, the alignment with strings is saved, the template is cleared down, and existing strings from the same alignment are replaced. This greatly simplifies working with complex rail junctions where editing is required after automated extraction.
- A new option has been added to the automate rail extraction tool to generate the centre line between the running edges

- Output from the automated rail extraction is now grouped by alignment such that all strings relating to a given alignment can be selected for deletion and cut & paste
- The option to extract cylindrical features now works with trees and will extract and categorise trees base on height, trunk diameter and spread radius. See the following video tutorial for more details

<https://www.youtube.com/watch?v=miyEQj36Ew0>



- The transformation spreadsheet has been updated to include distance residuals and a flag to say whether a given point is included or excluded from the transformation. An option has also been added to the Tools menu on the Data tab to check the transformation and residuals.
- The option to View model source files, in the Model tab, View group, Model sub menu, now includes options to select or clear all points from a given file or group. This enables deletion and copying of all points from a given file or group.
- The option to export the current viewpoint as a transformation has been added to the Viewpoint group of the Cloud tab.
- A bug has been fixed where the symbol associated with the ~OBSPIC feature was not being displayed
- A bug has been fixed where extra blank lines in a PTS file was causing the input to be truncated
- A bug has been fixed where arc to chord tolerance was not working on very small radius curves
- An update has been added to the LAS input to better support Beemobile inverted intensity values
- A bug has been fixed where exporting compressed LAZ files sometimes created corrupt output
- A bug has been fixed where inserting a point into a line in 3d was not working correctly with some point cloud snaps
- A bug has been corrected where the grid display was inheriting the border colour of the contour scale.

- The ground types in default libraries has been changed to not display by default as this was leading to ground types automatically showing after meshing a point cloud

This release is available for immediate download using the links below;

Full install (1.5gb): <http://www.atlas-files.com/scc-users/setup-scc-13-23-3.exe>

Update (130mb): <http://www.atlas-files.com/scc-users/setup-scc-13-23-3-update.exe>

MSI full (1.5gb): <http://www.atlas-files.com/scc-users/setup-scc-13-23-3.zip>

MSI update (130mb): <http://www.atlas-files.com/scc-users/setup-scc-13-23-3-update.zip>

Please note running these installations requires administrator privileges to properly install all components and that all components (SCC, Faro SDK, Trimble Link Engine, HASP driver and VS service packs) must all be installed for the installation to work. SCC r13 with the ribbon interface is currently supported on 64 bit versions of Windows 7 or later. SCC r13 classic is available for 64 and 32 bit versions of Windows 7 or later.



We have a youtube channel of video tutorials covering most of the typical uses of SCC here We are regularly adding to this channel so if there is any specific area you would like to see covered by a video tutorial, please let us know. Please subscribe to our channel to keep updated with new material.

If you would like a demonstration of the new features or any existing features of SCC we can be contacted at 003531 4958714 (Ireland), or in the UK via +44 (0)1767 666100 (Visual-ize). The SCC r13 brochure can be downloaded [here](#)

If there are any new features you would like to see added to SCC or have any problems with any of the existing features we'd be delighted to hear from you.



To keep up to date with developments in SCC please join our user forum [here](#) or Linked In group [here](#)