

Atlas Computers Ltd

15 Moyville Lawns,
Taylors Lane, Rathfarnham
Dublin 16
Ireland

Tel: +3531 4958714/5/6
Fax: +3531 4958717

Email: sales@atlascomputers.ie
support@atlascomputers.ie

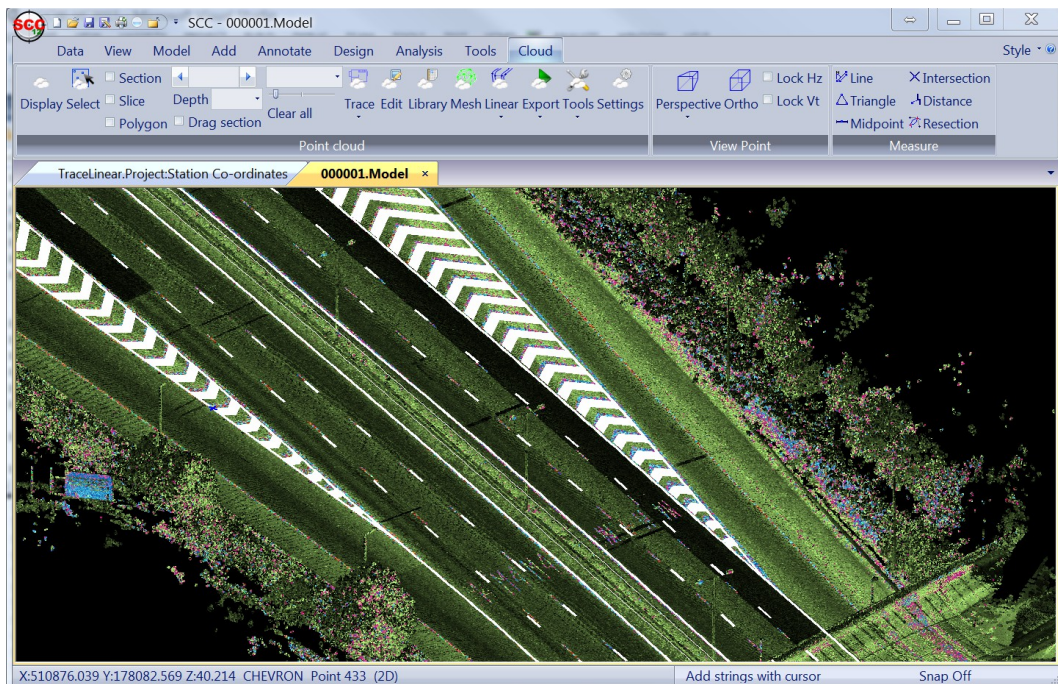
Web: www.atlascomputers.ie



Date: November 2016
Re: SCC release 12.1.13

We are pleased to announce a new interim update to SCC r12 with SCC 12.1.13. This release contains the following modifications from SCC 12.1.2;

- A number of new options have been added to simplify the creation of road markings from point clouds, including creation of solid and dashed white lines and chevrons. A video tutorial covering this along with updated linear tracing can be viewed here; www.atlas-files.com/scc-users/chevrons.mp4



- Options have been added to the point cloud trace linear features tool to allow the raw cloud to be coloured in section as per plan view with user defined pixel sizes.
- Feature name text for all points is now displayed in the point cloud trace linear features tool in section and in plan while creating points and selecting current

chainage. Text size can be controlled in the options dialog with the active point having larger text.

- An option has been added to the point cloud trace linear features tool to allow all points to be added to the current section based on a single selected anchor point.
- An option has been added to delete hatches from strings (which can be used to convert solid chevrons back to outlines) Note that new chevron and white line drawing tools are also available under the hatching menus in classic view.
- The point cloud triangulation / meshing has been updated to allow creation of TIN models based on object height and design separation in addition to elevation. Options to automatically weed the TIN and remove any noise have also been added to streamline creation of a ground model from a scan.
- The option to filter ground points from a point cloud has been significantly improved to deal with very noisy surfaces
- A new option has been added to the point cloud options to automatically eliminate noise. This is a density filter that removes all single points and small point groups that have no neighboring points in the cloud.
- Advanced options on create point cloud model are now hidden by default
- An option has been added to delete extended attributes from the point cloud, such as generated height difference and design separation data, which can significantly add to the size of the point cloud.
- A number of colouring schemes have been added from 1M, 100mm and 10mm isopachyte / design difference colouring.
- An option has been added to the coordinate spreadsheet under remove duplicate points to report on duplicate points rather than deleting them.
- The Leica HexML interface has been updated to better handle combined GPS/TPS jobs with free codes.
- Drawing speed of very large sections created from point clouds has been significantly improved.
- The option to import LSS load files has been updated to support advanced coding and LSS dot based coding.
- Ribbon drop downs including feature name, tag code, and DTM code now support keyboard searching
- The ESRI grid interface has been updated to support specification of grid points by centre as well as corner.
- A bug where adding clip polygons to a point cloud generated mesh required the TIN to be rebuilt has been fixed.
- A bug in when using live sections with point clouds on the ribbon interface that was leading to a crash has been fixed.
- A bug where SCC could crash when tracing linear features where graphics resources were limited has been fixed.

- A bug has been fixed where the toggle text tool was not working correctly with multi-line text contains multiple dimension macros.
- Updated the feature library specification report
- Corrected a text annotation issue on five point tree symbols.
- HASP drivers have been updated which is leading to faster start-up time on network licenses and also resolves an issue where SCC was slowing down when using a network license.
- Added a short video showing how keyboard and menu customisations are set-up in the ribbon interface here; www.atlas-files.com/scc-users/customise.mp4

This is available for immediate download using the links below,

Full install (1.3gb): www.atlas-files.com/scc-users/setup-scc-12-1-13-full.exe

Update (189mb): www.atlas-files.com/scc-users/setup-scc-12-1-13-upgrade.exe

MSI full (1.3gb): www.atlas-files.com/scc-users/setup-scc-12-1-13-full-msi.zip

MSI Update (180mb): www.atlas-files.com/scc-users/setup-scc-12-1-13-upgrade-msi.zip

Please note when running these installations under Windows 7 or later, download the set-up program, and from explorer use the **Run as Administrator** option given by right clicking the downloaded file. SCC r12 with the ribbon interface is currently supported on 64 bit versions of Windows 7 or later, SCC r12 classic is available for 64 and 32 bit versions of Windows XP or later.

In order to bring new users up to speed, we will be developing a library of video tutorials covering many of the typical uses of SCC. If there is any specific area you would like to see covered by a video tutorial, please let us know.

If you would like a demonstration of the new features or any existing features of SCC, we can be contacted directly at 003531 4958714 or via SCCS at 0044 1480 404888. The SCC r12 brochure can be downloaded [here](#).

To keep up to date with developments in SCC please join our user forum at <http://www.atlascomputers.ie/smf/index.php> or LinkedIn group at <http://www.linkedin.com/groups/SCC-users-4971870>