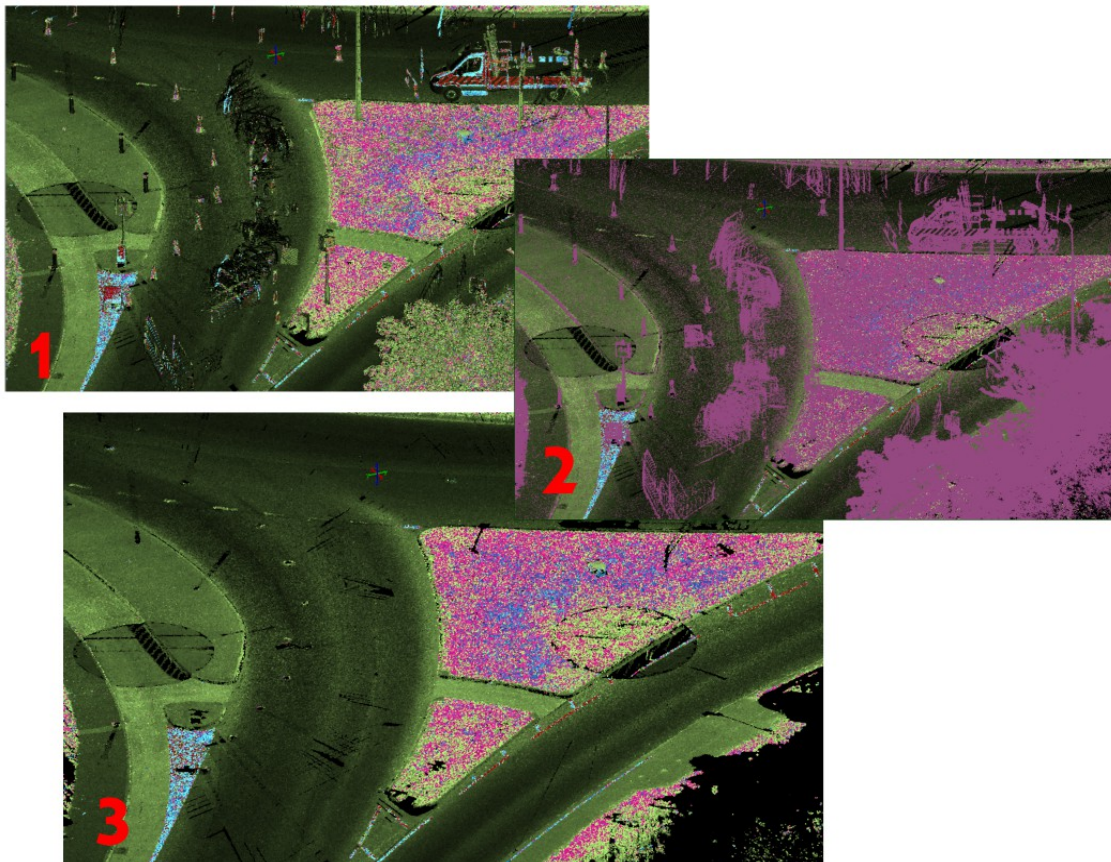


release¹¹ SCC Survey Control Centre

Date: May 2015
Re: SCC release 11.7.2

We are pleased to announce a new interim release of SCC with SCC 11.7.2. This release contains the following modifications from SCC 11.5.0;

- Ground filtering for point clouds has been added to allow automatic separation of scanned data into ground surface and other objects on the surface, such as vegetation, vehicles on roads, street furniture etc...



This includes support for storage of object heights, and enables rapid creation of clean DTMs from noisy scans.

- A new point cloud option has been added to compute and store differences between the scanned data and either a template based design or poly-cylinder.
- Point cloud features can now be coloured by object height, and design separation in addition to elevation and intensity.
- Additional text macros have been added to draw scales for point cloud elevation, intensity, object height, and design separation.
- A new option has been added to allow ancillary TIN surfaces to be generated from a model, which can be based on projecting to the ground, the current view plane, or an arbitrary transformation.
- Creation of TIN models from point clouds also now supports triangulation to the current view plane, and includes options for limiting the TIN to ground points only or all points, and weeding of the resultant TIN based on the point cloud.
- The cylindrical transformations now allow you to specify a starting vertical angle that corresponds to the Y origin on the projected model.
- An additional option has been added to the least squares adjustment to force station constraints for weak networks where they would exceed the standard errors specified.
- Tape and offset now includes an option to tape from points, and to specify whether the generated point is relative to the first or second point on the base line. The dialog also includes a short cut button to change snaps while taping.
- The compare strings and remove overlaps function now includes an extra alignment button to specify whether alignments are created based on best fit geometry or polylines and arcs.
- Some additional field coding options have been added to simplify migrating from n4ce to SCC.
- When exporting to Google Earth KML, any ampersand '&' characters are now replaced with plus '+' characters, as ampersands were causing files to be rejected.
- Crystal reports based on traverses with primarily numeric station names were assuming the station name field was numeric. This is no longer the case.
- The option to report only when reducing a traverse was not working when used with Crystal reports. This has also been corrected.
- Maximum length for layer names for AutoCAD and Microstation exports has been extended from 32 characters to 128 characters.
- A bug where a crash that was occurring with point cloud selection dialog on certain models and graphics card combinations has been correct
- Arrow keys and point cloud section position is now maintained between point cloud and other operations
- A bug has been fixed where the option to automatically generate steps was not working in certain circumstances
- A bug has been fixed where the combined kerb generation was not working in certain circumstances
- An option has been added to skip checking for network licenses, which improves the start-up speed for node locked and demo licenses.
- There have been a number of minor enhancements and fixes to the tree survey functionality

- Some additional error checks and reporting have been added to help isolate very weak resections in networks.
- The Trimble JXL interface has been updated to allow blank and illegal dates
- Annotating of plot names now includes support for multi-line plot names, where a ~ character can be used to indicate a line break.
- A bug has been fixed in the ArcInfo grid import routine, where on some files the result was rotated by ninety degrees.
- The DGN export has been updated to better support rotated text in 3d design files.
- A bug has been fixed in the option to unlock symbols, where in some models the original symbol was still being shown
- A bug has been fixed in the unscaled two point symbol routine where the lateral dimension of the symbol was being taken from the feature library.
- A bug has been fixed in user defined export, where feature names were not being exported for some format files
- The license file reader has been updated such that license files can be read from the 64 bit version of SCC in addition to the 32 bit version.
- SCC now allows you to change the Normal text style

SCC 11.7.3 is available for immediate download using the links below.

Full install (970mb): <http://www.atlas-files.com/scc-users/setup-scc-11-7-3-full.exe>

Update (75mb): <http://www.atlas-files.com/scc-users/setup-scc-11-7-3-patch.exe>

Please note when running these installations under Windows 7 or 8, download the set-up program, and from explorer use the **Run as Administrator** option given by right clicking the downloaded file.

If you would like a demonstration of the new features or any existing features of SCC, we can be contacted directly at 003531 4958714 or via SCCS at 0044 1480 404888.

To keep up to date with developments in SCC please join our user forum at <http://www.atlascomputers.ie/smf/index.php> or LinkedIn group at <http://www.linkedin.com/groups/SCC-users-4971870>