

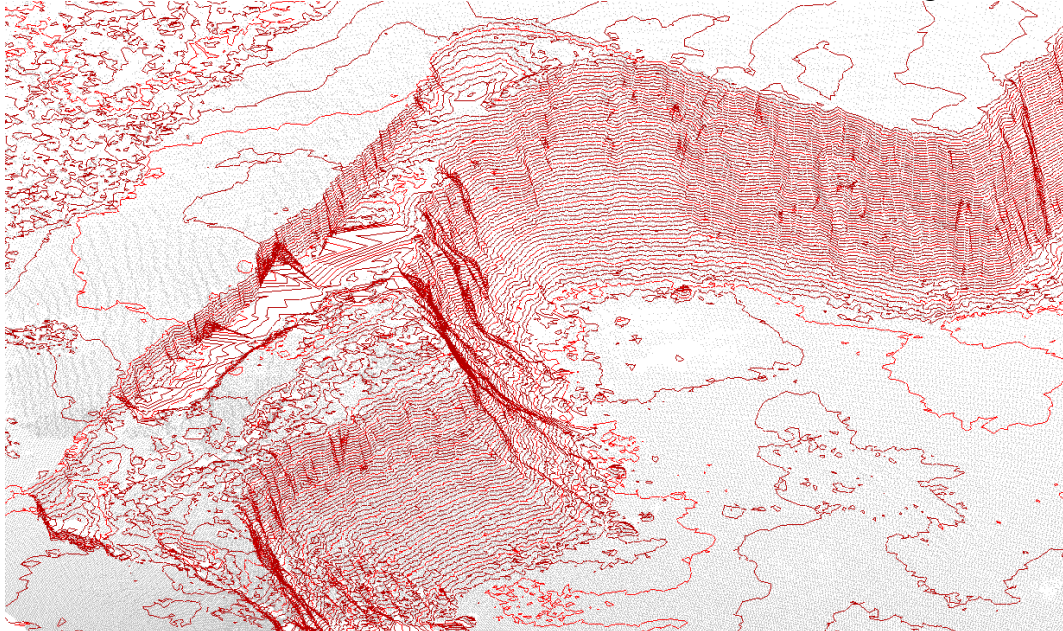
# release<sup>11</sup> SCC Survey Control Centre

**Date:** October 2014  
**Re:** SCC release 11.3.0

---

We are pleased to announce a new interim release of SCC with SCC 11.3.0. This release contains the following modifications from SCC 11.1.1;

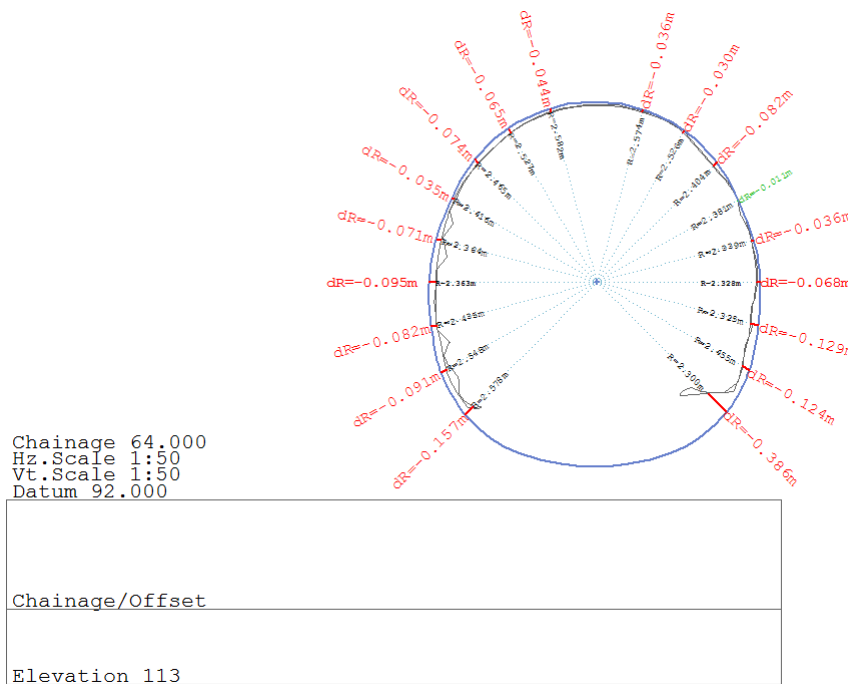
- Creation of optimized TIN models from point clouds has been made significantly faster, and options have been added to specify minimum mesh density and maximum total points allowed.
- An extra option has been added when creation of TIN models from point clouds to either create a new model, or add the results to the existing model.



- Rotation of the model view in 3d can now be carried out in most editing options using the arrow keys, with double left mouse click to set the rotation origin. This greatly simplifies digitising complex 3d strings from point clouds.
- An extra option has been added to copy and paste template shapes from models to the section template view at the current chainage. This allows

templates designed in CAD and other engineering software to be easily transferred into SCC.

- An extra option has been added to the section template design view to string the section template by string number rather than offsets, to simplify working with tunnel sections.
- An extra option has been added to the Cross sections from alignment function to allow the design template to be included on the cross sections without having to first model the design. This is particularly useful when dealing with tunnels and other template based designs that do not suit TIN based modelling.



- The option for surveying rail strings by measuring cant and gauge using a cant stick has been enhanced to support vertical and horizontal prism offsets to the cant stick.
- Extra symbology types have been added to the feature library, combining strip levels and macro-lines. These can be used for hedges of varying width, and to allow more flexibility in editing hedges.
- Polygonal macro-lines such as closed vegetation lines now always include a closing link
- There have been a number of updates to the tree surveying processing, including combining all entities relating to a given tree into a single block on output, additional hatched tree symbols, and simplification of the tree surveying feature library.
- New advanced feature code types have been added to allow combination of dimensions with GIS attributes.
- The Optimal PoleCAD output has been updated to include GIS attributes in a specific order.
- Trimble DC and SDR files allow specific remark text to be removed, and to automatically ignore points which have a deleted remark associated with them.
- A new default Curve type of running arc has been added to the feature library. This corresponds to the Arc tag code, which can be used to create a curve made up of a series of arcs, and is useful for near circular features such as circular tanks.

- Some additional updates have been made to the LandXML input to support a wider range of horizontal and vertical curve types.
- A bug has been fixed in the display driver where point symbols oriented by surveyed string direction were getting oriented to the grid.
- New installation options have been added to include an additional 32 bit version of SCC suitable for older low-end processors such as early Intel Pentium and Core2 Duo devices.

This is available for immediate download using the links below.

Full install (970mb): [www.atlas-files.com/scc-users/setup-scc-11-3-0-full.exe](http://www.atlas-files.com/scc-users/setup-scc-11-3-0-full.exe)

Update (75mb): [www.atlas-files.com/scc-users/setup-scc-11-3-0-patch.exe](http://www.atlas-files.com/scc-users/setup-scc-11-3-0-patch.exe)

Please note when running these installations under Windows 7 or 8, download the set-up program, and from explorer use the **Run as Administrator** option given by right clicking the downloaded file.

If you would like a demonstration of the new features or any existing features of SCC, we can be contacted directly at 003531 4958714 or via SCCS at 0044 1480 404888.

To keep up to date with developments in SCC please join our user forum at <http://www.atlascomputers.ie/smf/index.php> or LinkedIn group at <http://www.linkedin.com/groups/SCC-users-4971870>