

SCC 10.16.5

Date: 6 December 2013
Re: Release notes for SCC 10.16.5

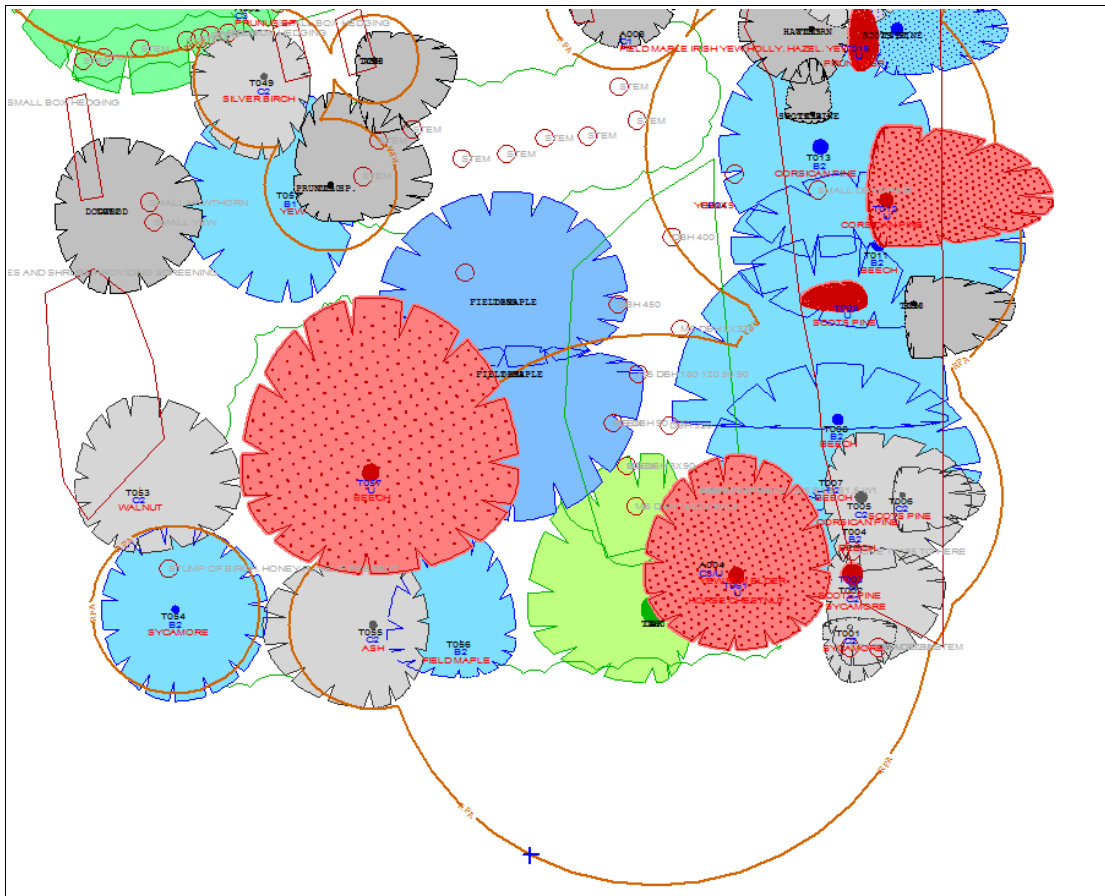
We are pleased to announce a new release of SCC with SCC 10.16.5. This is available for immediate download here;

Full install (860mb): www.atlas-files.com/scc-users/setup-scc-10-16-5-full.exe
Update install (56mb): www.atlas-files.com/scc-users/setup-scc-10-16-5-update.exe
Zip file for 32 bit (16mb): www.atlas-files.com/scc-users/SCC-10-16-5.zip
Zip file for 64 bit (11mb): www.atlas-files.com/scc-users/SCC64-10-16-5.zip

This release contains the following modifications from SCC 10.11.0;

- Extra sectioning options have been added to allow vertical and oblique cross sections to be taken through point clouds, with tools for automatic smoothing and line fitting on the sections generated. See **Sections / Vertical tunnel cross sections through cloud** and **Sections / Oblique tunnel cross sections through cloud**
- The Microstation DGN output has been updated to support alpha-numeric level names of up to sixty four characters.
- An extra design option has been added to allow a best fit plane to be computed for selected points, with options to drape all selected points on the plane, or output the points to a new surface for volume measurement. The option also reports results including point, and residuals, and weighting of input data. See **Design / Plane fit selected points**
- An additional reduction option has been added to compute and report reduction based on London Underground work-flows. See **Edit / Reduce** from the traverse observations view.
- The feature annotation dialog has been updated to include an extra tab to allow features to be selected and annotated by group and to use a regular grid control. Features can be allocated groups within the feature library.
- A new report, **Alignment Height differences.rpt**, has been added to report height differences between selected points and an alignment.

- An extra option has been added to the cross sections from alignment function to add extra sections at user specified chainages.
- An extra option has been added to the section radial annotation function to add extra radials at user defined angles.
- An additional report has been added to include X,Y data when reporting radial separation by section.
- An additional tab has been added to the Query and Edit points dialog in the case where GIS attributes can be stored against any given point. This is controlled by the GIS layer field in the feature library, where attributes can only be entered against features where this field is not blank. The GIS attributes for any given GIS layer can be set-up via **Edit / GIS data fields** from the feature library view.
- An extra option has been added to Advanced survey coding control field types to allow collection of GIS data fields against any point for all loggers supporting advanced codes. This option expects pairs of data comprising of field name and field value. These will typically come from free codes in a Leica file, or attributes in a Trimble DC or JXL file. These fields can be edited within the model, reported on, and exported as the DBF part of ESRI shape files.
- New hatching options have been added to include point hatches, solid hatches, cross hatches with solid fills and point hatches with solid fills. Note that the colour given in D3 is used for solid fills. Hatches can also now be associative, such that if the polygon being hatched is edited, the hatch is also updated. All solid hatches must be associative. SCC symbols can now also include these new hatch types.



- An extra model option has been added under **Edit / Edit Strings / Combine polygons**, to create a single bounding polygon from a set of selected overlapping polygons. This is of particular benefit in establishing a combined RPA (root protection area) for BS 5837:2012 tree surveys
- The ADB input function now includes an option to automatically combine all RPA polygons into a single bounding polygon.
- An additional feature style has been added for wriggle sections, to include annotation of design centre-line and highlight outliers.
- An extra option has been added to the model transformation to re-align all grid aligned text back to the grid after performing a transformation that included a rotation.
- An extra option has been added to the **Model / ASCII X,Y,Z** dialog to allow modelling of data containing feature,X,Y,Z where long feature names including string numbers are allowed.
- Modelling speed for large data sets containing very large numbers of duplicate points has been dramatically improved, with triangulation time for an 80mb test model being reduced from 15 minutes to 20 seconds.
- A bug has been fixed where features with DTM codes forced to D were causing spurious graphics in the feature wizard.
- A bug has been fixed where grids exported to AutoCAD in paper units were going out in model units.
- A bug has been fixed where true type fonts were not being exported to AutoCAD on Windows 7 PCs where administrator privileges were not available.
- A bug has been fixed where attaching a library to an existing model with different associative text settings was causing extra text to be drawn
- An updated driver has been included which provides better support for entering license codes on the 64 bit release.

Please note when running these installations under Windows 7 or later, download the set-up program, and from explorer use the **Run as Administrator** option given by right clicking the downloaded file. The full installation of this release of SCC is significantly larger than previous releases as it includes some large tutorial sample files and updated on-line help.

If you would like a demonstration of the new features or any existing features of SCC, we can be contacted directly at 003531 4958714 or via SCCS at 0044 1480 404888.

To keep up to date with developments in SCC please join our user forum at <http://www.atlascomputers.ie/smf/index.php> or LinkedIn group at <http://www.linkedin.com/groups/SCC-users-4971870>